

H115.0558 Teleskopstation / Station télescopique  
Montageanleitung / Instructions de montage  
Assembly instruction



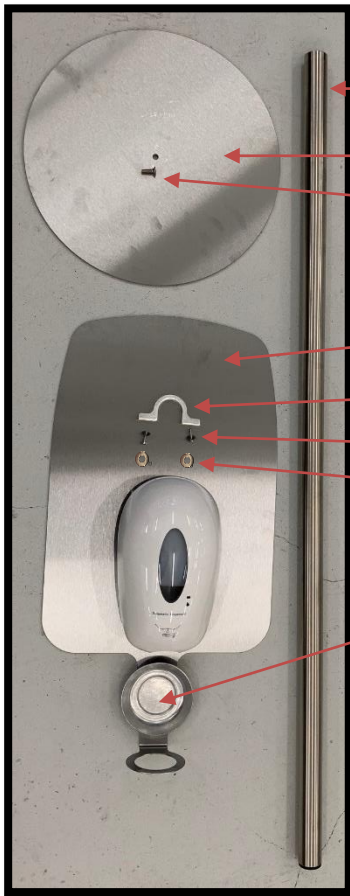
**Ernst Hausammann & Co. AG**  
CH-8010 Zürich  
Rautstrasse 19, Postfach  
Tel 0800 815 844  
Fax +41 44 491 22 11  
info@hausammann.com  
www.hausammann.com





**Ernst Hausammann & Co. AG**

CH-8010 Zürich  
Rautistrasse 19, Postfach  
Tel 0800 815 844  
Fax +41 44 491 22 11  
info@hausammann.com  
www.hausammann.com

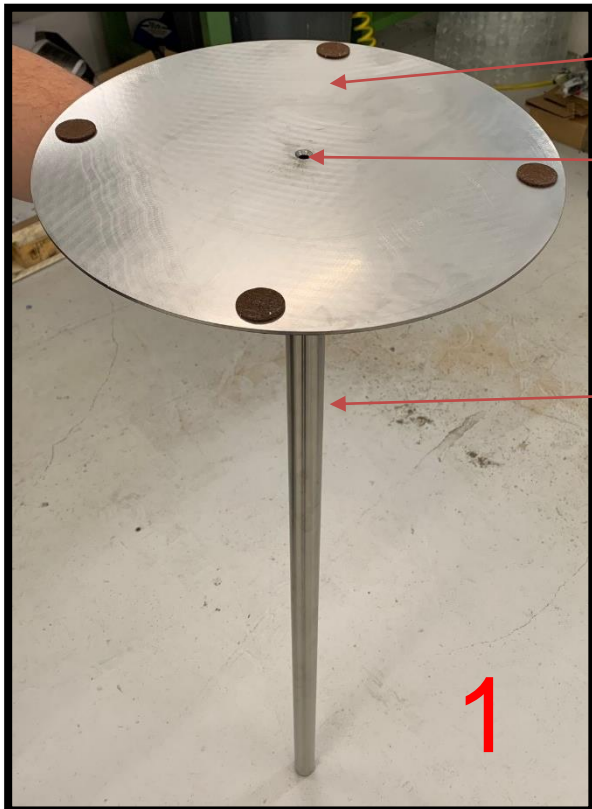


A  
B  
Ba  
C  
Ca  
Cb  
Cc  
D

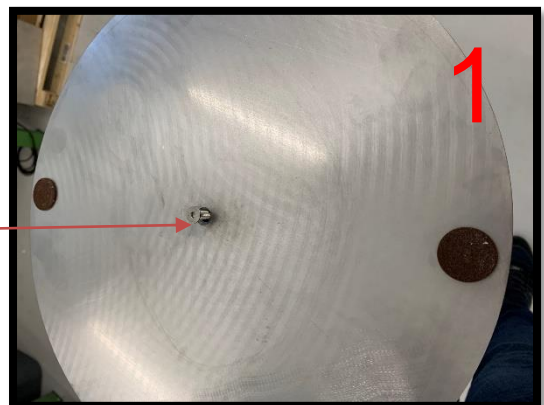
C  
O  
N  
T  
E  
N  
T

**Wenn Sets vormontiert**

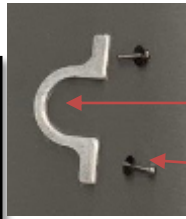
- Nur Schritt 1+3 nötig
- Schritt 2 vormontiert



B  
Ba  
A



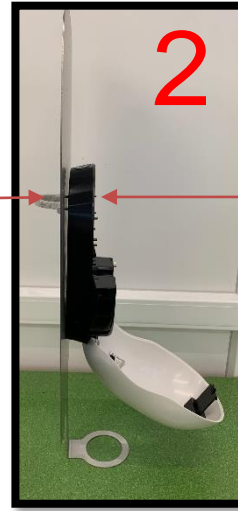
Ba



C

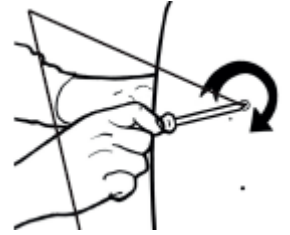
Ca

Cb + Cc



Ca

Cb + Cc

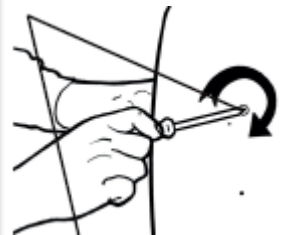
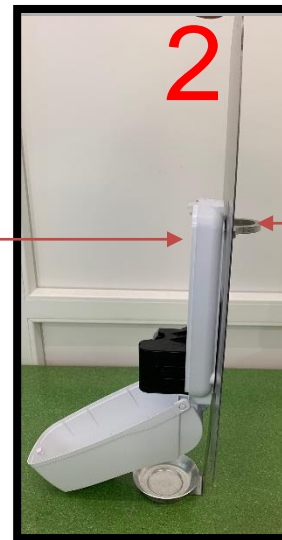


2/3



Cb + Cc

2/3







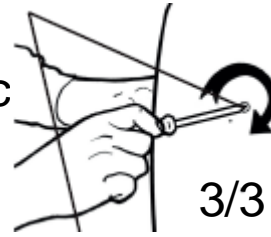
**Ernst Hausammann & Co. AG**

CH-8010 Zürich  
Rautistrasse 19, Postfach  
Tel 0800 815 844  
Fax +41 44 491 22 11  
info@hausammann.com  
www.hausammann.com

Ca



Cb + Cc

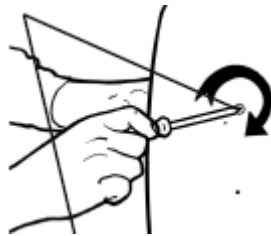


3/3

D

3

Cb + Cc



3/3



3